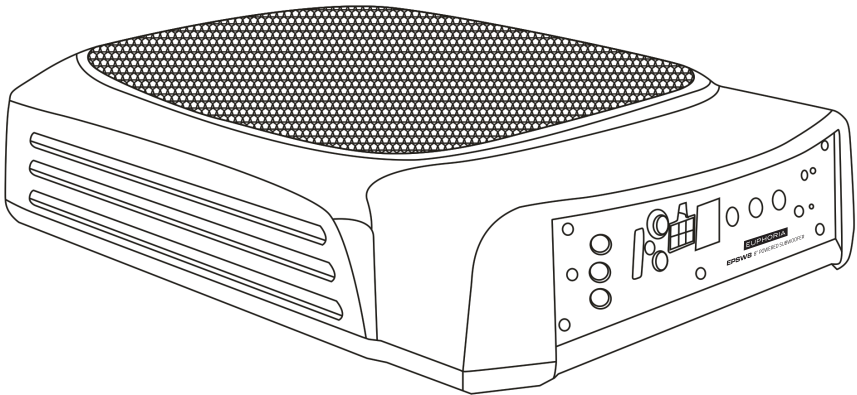




EUPHORIA™

EPSW8 | EPSW10

Powered Subwoofer



USER'S MANUAL



DB Research L.L.P. - 302 Hanmore Industrial Parkway - Harlingen, TX 78550
Ph: (877) 787-0101 - Fax: (956) 421-4513 - www.dbdrive.net

Due to continuous improvement of the product, specifications are subject to change without notice.

Introduction

Congratulations on your purchase of a DB Drive state-of-the-art powered subwoofer. Your selection of a DB Drive car audio product indicates a true appreciation of fine musical reproduction. Whether adding to an existing system or including your DB Drive powered subwoofer in a new system, you are certain to notice immediate performance benefits.

Product Commitment

DB's engineering professionals harnessed years of expertise, experience and passion, coupled with exhaustive testing and creative design to develop the optimal product and performance for your musical enjoyment. This is our commitment to you. It's what you deserve and have come to expect from DB DRIVE. We appreciate the confidence and look forward to your positive experience.

Keep Your Sales Receipt

Take this time to attach your sales receipt to the manual and put in a safe place. In case of any unforeseen reason this product may need warranty service, your receipt will be necessary to establish purchase date.

Recommendation

A power subwoofer's performance is only as good as its installation. Proper installation will maximize the system's overall performance. It is recommended that you have our product installed by an authorized DB Drive retailer. However, if you decide to install it yourself, please carefully read through this manual and take your time to do a quality installation.

Optimal Product Choice

To get the maximum performance out of your stereo system, we recommend using 100% authentic DB Drive electronics and DB LINK wiring and accessories. Matching DB Drive amplifiers and speakers with your state-of-the-art electronics purchase is critical to optimize your system's performance. Wiring is the lifeblood of a system, make sure your audio system has the adequate current and signal transfer it deserves and needs. DB Link has it all, from wiring rolls; speaker power ground, remote to amplifier kits, RCAs, fuse holders, distribution blocks and battery connectors. Insist on getting the best, DB LINK. It's what you deserve to get the optimum performance from your audio System.

IMPORTANT!

Before making any connections, disconnect the car's battery until the installation is completed to avoid possible damage to the electrical system.

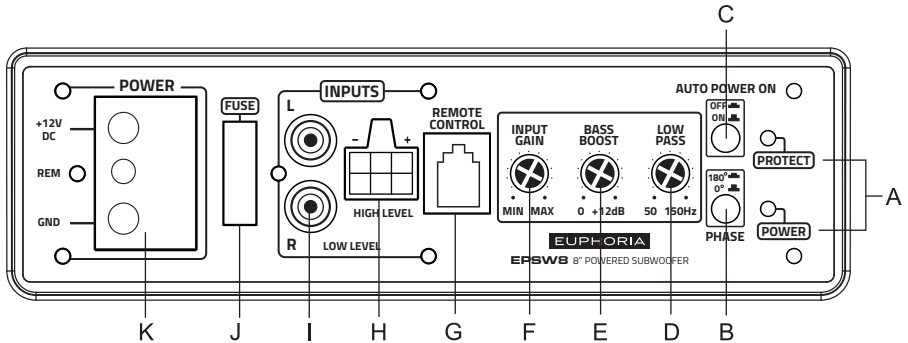
WARNING!

Exposure to high power sound system can cause hearing loss or damage. Listening to your system at loud levels while driving will impair your ability to hear traffic sounds and emergency vehicles. Use common sense when listening to your system.

Serial # _____ Model # _____



Panel Controls and Features



A. POWER STATUS LED

This power LED glows green when power is on. The protect LED will glow red if one of the protection circuits comes on.

B. PHASE SHIFT

Use this switch to help compensate for time alignment problems in the system. Such problems usually result from having the subwoofer at a different distance from the listener than the other speakers in the system.

C. AUTO POWER ON

The AUTO POWER ON (ON/OFF) is for high level (speaker-level) connections. When the switch is in the "ON" position, the subwoofer will AUTO POWER ON when there is signal input. If the amplifier detects no signal input, the amplifier will auto power off. If you prefer to use the remote turn on/off connection, leave switch in the "OFF" position.

NOTE: Please connect the remote terminal to the remote output of head unit as Fig.4, when you hear the unit turn ON/OFF pop noise from the subwoofer.

D. LOW PASS FILTER

This control allows you to fine tune the frequency range you want the subwoofer amplifier to receive.

E. BASS BOOST

The BASS BOOST feature will increase the sound level in the bass frequencies.

F. INPUT GAIN CONTROL

After you have installed your system, turn this control to minimum. Turn the head unit on (and the subwoofer will turn on via the remote connection). Turn the head unit volume to about 2/3 full level. Slowly turn up the subwoofer input gain control until you hear a small amount of distortion. Then reduce the level until the distortion is completely gone. Level the control at this setting.

G. REMOTE LEVEL CONTROL PORT

Attach the included remote level control to control the volume level of the subwoofer independently.

H. HIGH LEVEL (speaker level) INPUTS

If your head unit does not have RCA outputs you can use the speaker outputs for the audio source for the subwoofer. Use the supplied cable and wire harness and connect the outputs properly as shown in the connection diagram in this manual.

I. LOW LEVEL RCA INPUTS

If RCA outputs are present on your head unit low level inputs are the recommended way to introduce the audio signal into your subwoofer.

J. FUSE

Do not use a fuse with a different value other than the original value.

K. POWER INPUT TERMINAL

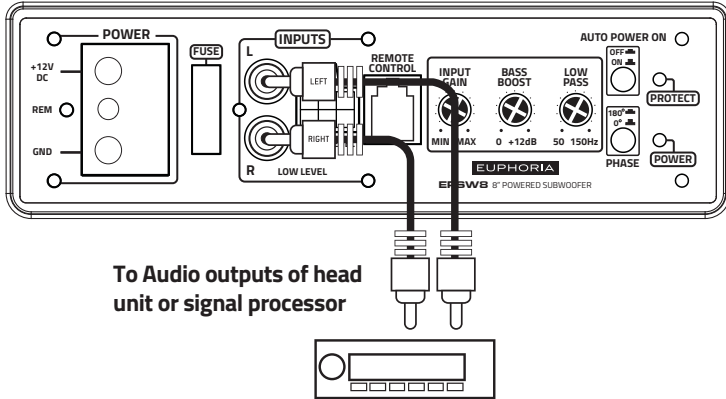


H. Low Level Input Wiring

Low-level (RCA) input wiring is preferred for best audio performance. Most trunk or hatchback installations will require a 15-20 feet RCA cable, while pickup trucks and under-seat installations will require a 6-12 feet RCA cable. Always use a high quality cable.

NOTE: Do not connect BOTH the high level and low level inputs from your receiver to your amplifier at the same time!

Fig.1

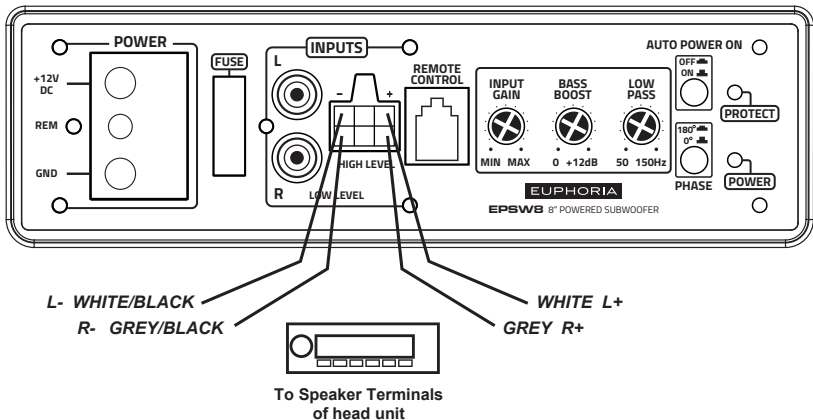


I. High Level Input Wiring

The high level input(s) should only be used when your receiver lacks RCA outputs. If the RCA outputs are not present, connect the speaker outputs from the receiver to the high level input connector of the amplifier. Be sure to observe polarity to avoid audio phase problems.

NOTE: Do not connect BOTH the high level and low level inputs from your receiver to your amplifier at the same time!

Fig.2



Power Connections

Connect the ground terminal to the closest point on the chassis of the vehicle. Keep this ground wire to less than 39" (100 cm) in length. Use 8 gauge (or heavier) wire.

Connect the remote terminal to the remote output of head unit using 16 gauge (or heavier) wire.

Connect a fuse holder within 18" (45 cm) of the car battery, and run 8 gauge (or heavier) cable from this fuse to the amplifier location.

Then connect the fuseholder to the "BATT+" (+12V) connection on the subwoofer rear panel.

Fig.3

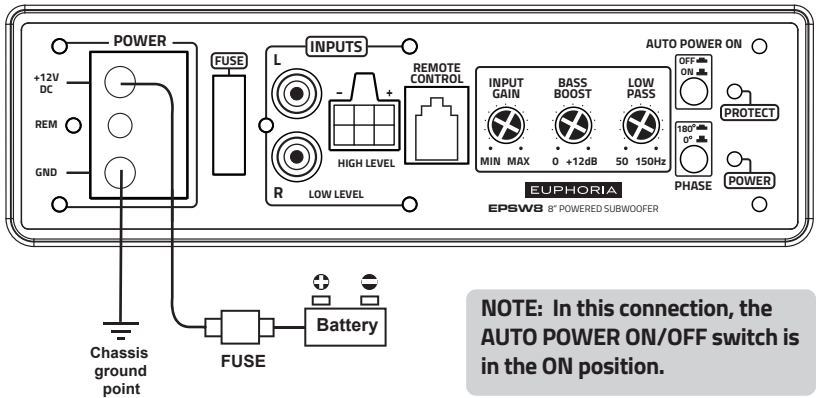
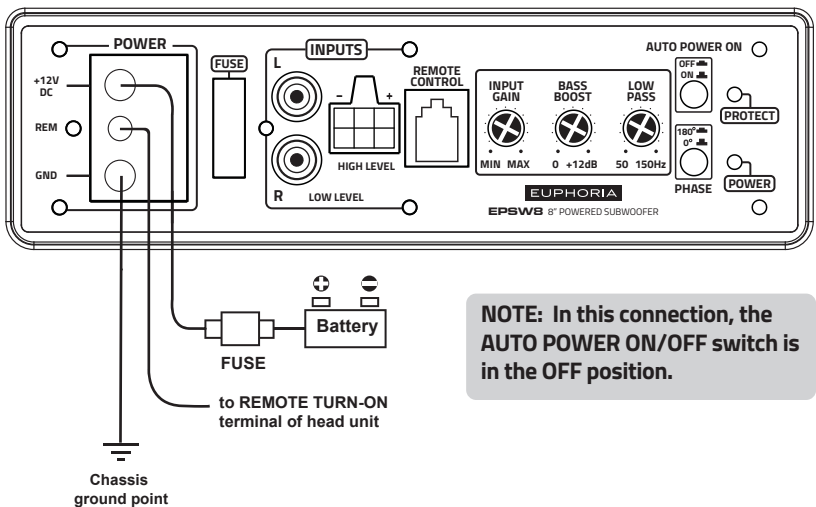
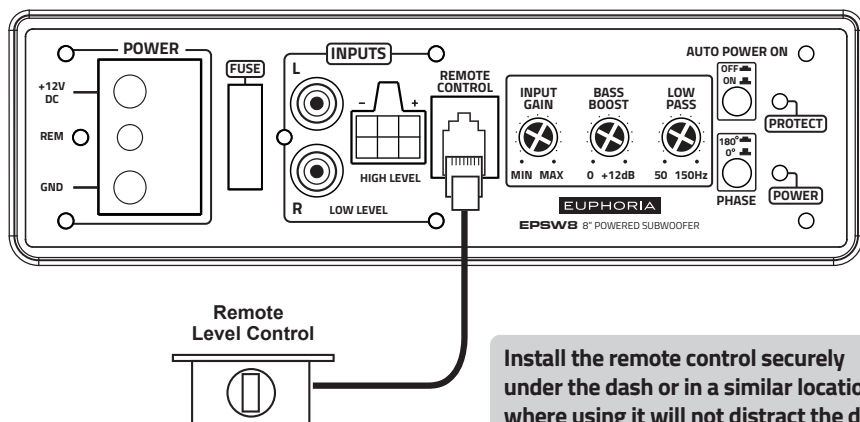


Fig.4



Remote Level Control Connection

Fig.5



Install the remote control securely under the dash or in a similar location where using it will not distract the driver.

MODEL:	EPSW8	EPSW10
Max Power	250W	300W
RMS Power	125W	150W
THD	<0.2%	<0.2%
Signal-to-Noise Ratio	>91dB	>91dB
Frequency Response	50Hz-150Hz	50Hz-150Hz
High Input Sensitivity	5V-20V	5V-20V
Low Input Sensitivity	0.2V – 5V	0.2V – 5V
Low Pass Filter	50Hz - 150Hz	50Hz - 150Hz
Bass Boost	12dB	12dB
Fuse Rating	25A	25A
Subwoofer	8"	10"
Dimensions (L x H x W)	L- 12.63 in/ 320 mm H-3.07 in/ 78mm W- 9.5in/ 241mm	L- 14.38 in/365mm H-3.07 in/78mm W-10.5in/267mm

All specifications subject to change without notice.



Troubleshooting

If you experience operation or performance problems with this product, compare your installation with the electrical wiring diagram on the previous pages. If problems persist, read the following troubleshooting tips which may help eliminate the problems.

SYMPTOM	POSSIBLE REMEDY
Products will not power up	<ul style="list-style-type: none"> ▪ Check to make sure you have a good ground connection. ▪ Check that the Remote Input (Turn-On) has at least 5VDC. ▪ Check that there is battery power on the (+) terminal. ▪ Check that there is at least 12v. ▪ Check all fuses, replace if necessary. ▪ Make sure that the Protection LED is not illuminated. If it is lit, shut off the amplifier briefly, and then repower it.
Protection LED comes on when amplifier is powered up	<ul style="list-style-type: none"> ▪ Turn down the volume control on the head unit to prevent overdriving. ▪ Check that there is good air circulation around the amp.
No Output	<ul style="list-style-type: none"> ▪ Check that all fuses are OK. ▪ Check that unit is properly grounded. ▪ Check that the Remote Input (Turn-On) has at least 5VDC. ▪ Check that the RCA audio cables are plugged into the proper inputs.
Low Output	<ul style="list-style-type: none"> ▪ Reset the Level Control. ▪ Check the Crossover Control settings.
High hiss in the sound	<ul style="list-style-type: none"> ▪ Disconnect all RCA inputs to the powered subwoofer's control panel. If the hiss disappears, then plug in the component driving the amplifier and unplug its inputs. If the hiss disappears at this point, go on until the faulty/noisy component is found. It is best to set the amplifier's input level control as low as possible. The best subjective signal-to-noise ratio is achieved in this manner. Try to set the head unit as high as possible (without distortion)
Squealing noise is present	<ul style="list-style-type: none"> ▪ Check for improperly grounded RCA interconnects
Distorted sound	<ul style="list-style-type: none"> ▪ Check that the Input Level Control is set to match the signal level of the head unit.
Engine noise (static whine)	<p><i>This is usually caused by poor quality RCA cables, which can pick up radiated noise. Use only the best quality cables, and route them away from power cables.</i></p>
Engine noise (alternator whine)	<ul style="list-style-type: none"> ▪ Check that the RCA grounds are not shorted to the vehicle chassis ▪ Check that the head unit is properly grounded.





EUPHORIA™

LIMITED WARRANTY

DB Drive™ Euphoria™ warrants any products purchased in the U.S.A. from an authorized DB Drive™ Euphoria™ dealer.

All products are warranted to be free from defects in material and workmanship under normal use and service for a period of (2) years. This warranty applies to the original purchase only.

DB Drive™ will either repair or replace (as its option) any unit that has been found to be defective and under warranty provided the defect occurs within the (2) years warranty period.

DB Drive™ Euphoria™ products installed by an authorized DB Drive™ Euphoria™ dealer will receive (2) years of warranty

This limited warranty does not extend to units that have been subjected to misuse, abuse, neglect, or accident. In DB Drive™'s judgment, products that show evidence of having been altered, modified, or serviced without DB Drive™'s authorization, will be ineligible under this warranty

To obtain warranty service please contact your retailer or visit our website at www.euphoriacaraudio.com for more details.



DB Research L.L.P. ■ 302 Hanmore Industrial Parkway ■ Harlingen, TX 78550
Ph: (877) 787-0101 ■ Fax: (956) 421-4513 ■ tech support: support@dbdrive.net

Designed and Engineered in the U.S.A. 