



## LIMITED WARRANTY

DB Drive warrants any products purchased in the U.S.A. from an authorized DB Drive dealer. All products are warranted to be free from defects in material and workmanship under normal use and service for a period of one (1) year. This warranty applies to the original purchase only.

DB Drive will either repair or replace (as its option) any unit that has been found to be defective and under warranty provided the defect occurs within the one (1) year warranty period.

This limited warranty does not extend to units have been subjected to misuse, abuse, neglect, or accident. In DB Drive's judgment, products that show evidence of having been altered, modified, or serviced without DB Drive's authorization, will be ineligible under this warranty.

To obtain warranty service please contact your retailer or visit our website at [www.dbdrive.net](http://www.dbdrive.net) for more details.

Tel : 956-428-4263 Fax : 956-421-4513  
[www.dbdrive.net](http://www.dbdrive.net)



# OKUR

**Installation Instructions / Owner's Manual**

**MODEL**

**E7 3X**

**3-Way Active Electronic Crossover**

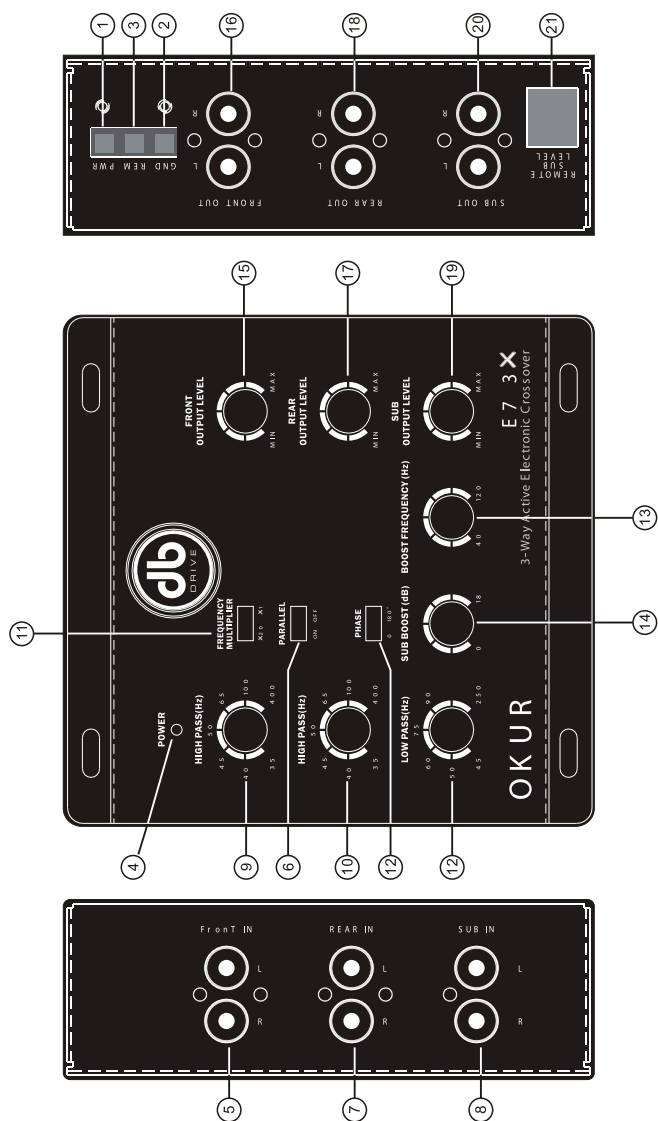


**DB Research L.L.P.**

302 Hanmore Industrial Parkway // Harlingen, TX 78550  
ph: 877.787.0101 // fx: 956.421.4513 // [www.dbdrive.net](http://www.dbdrive.net)

## INTRODUCTION

### FEATURES :



## SPECIFICATIONS

Supply voltage : 11-15V DC  
 Input current: 0.3amp max  
 Distortion: 0.01% THD  
 Frequency response: 10Hz-50KHz-3dB  
 S/N ratio (Aweighted): >95dB  
 Separation: 60dB

Crossover frequencies(continuously variable):

Front High-pass : (x1): 35-400Hz  
 (x20): 700-8KHz

Rear High-pass: (x1): 35-400Hz

Sub Low-pass: 45-250Hz

Sub boost: Single octave -18dB to +18dB (variable)at 50 to 100Hz(variable)

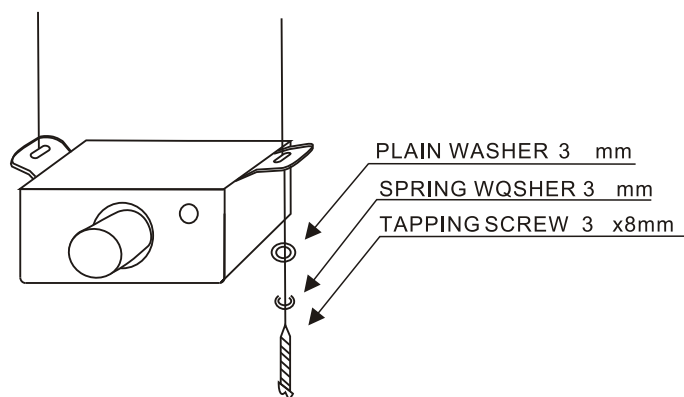
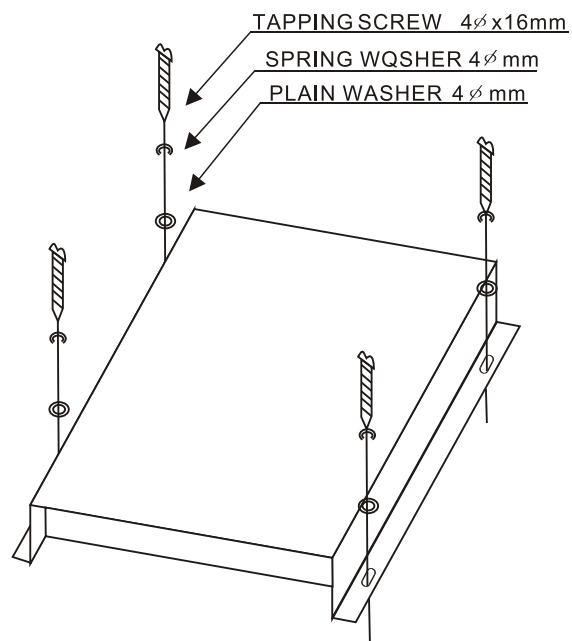
input impedance: >10K Ohms

Output impedance: <1K Ohms

Output voltage level: 8 volts max.

FEATURES AND SPECIFICATIONS SUBJECT TO CHANGE AND / OR IMPROVEMENT WITHOUT NOTICE

## INSTALLATION



## FUNCTIONS

1. POWER INPUT TERMINAL (12V).
2. GROUND INPUT TERMINAL.
3. REMOTE TURN-ON INPUT TERMINAL (REMOTE).
4. POWER INDICATOR.
5. FRONT INPUT.
6. FRONT AND REAR PARALLEL SWITCH SELECT.
7. REAR INPUT.
8. SUB INPUT.
9. FRONT HIGH PASS CONTROL.
10. REAR HIGH PASS CONTROL.
11. FRONT FREQUENCY MULTIPLIER CONTROL.
12. SUB FREQUENCY CONTROL.
13. BOOST FREQUENCY CONTROL.

## FUNCTIONS

14.SUB BOOST CONTROL.

15.FRONT OUTPUT LEVEL CONTROL.

16.FRONT OUTPUT.

17.REAR OUTPUT LEVEL CONTROL.

18.REAR OUTPUT.

19.SUB OUTPUT LEVEL CONTROL.

20.SUB OUTPUT .

21.REMOTE LEVEL CONTROL.

## TROUBLE SHOOTING GUIDE

PROBLEM	POSSIBLE CAUSE
1.There is an audible distortion at a low volume level	Output levels NOT set correctly.
2.A whining sound can be heard through the speakers when the audio system is At low volume with the engine running. The whining noise remains unchanged or seems to disappear when the volume level is increased.	Check the red power wire, it must be connected directly to the battery. Check the system's ground point, it must make good contact with chassis ground (bare metal), The radio and the CROSSOVER must be grounded at the same reference point .
3.There is a "motorboating "type of sound when the engine is running and the audio system volume is set at a reasonably high level.	Check the red power wire, it must be connected directly to the battery. Check the system's ground point , it must Make good contact with chassis ground (bare metal).

## NOISE CHECK&SYSTEM ADJUSTMENT

### NOISE CHECK

Check the entire audio system for noise before permanently securing the CROSSOVER mounting

- 1.Start the engine.
- 2.Tum the audio system on.
- 3.Rev the engine and vary the VOLUME of the audio system to determine if there is any unwanted noise.  
If os ,turn both the audiosystem and the engine off. Do not secure the CROSSOVER mounting screws. Referto the :Trouble Shooting Guide"at this manual.
- 4.If the audio system does not have any noise, securely tighten the CROSSOVER mounting screws and double check the wiring cables for safe placement.

### SYSTEM ADJUSTMENT

#### Prelimnary Adjustments

Pre-setting the system provides a necessary starting point for fine-tuning the entire audio system to maximum performance.

NOTE: DO NOT MOUNT CROSSOVER UNTIL THE FOLLOWING PROCEDURES HAVE BEEN COMPLETED.

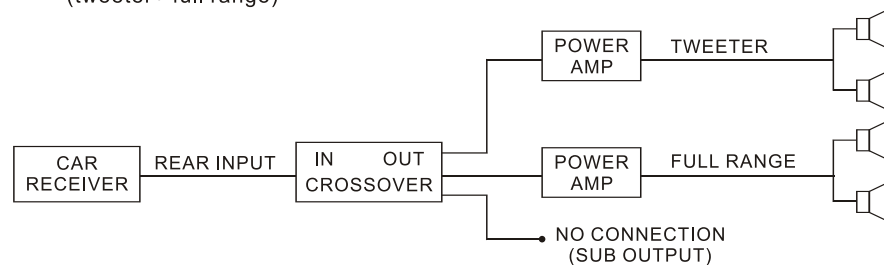
- 1.Preset each amplifier input gain adjustment at the amplifier to half of maximum.
- 2.Before turning the audio system on, preset-adjust the front, rear and sub-woofer output level controls, as well as the front channel high-pass and sub-woofer channel low-pass crossover points.
- 3.Slowly turn the volume up and listen carefully for: Obvious trouble in sound (distortion, no sound no hiss. total silence). Turn the system off refer to "Trouble Shooting Guide" at this manual.

#### Caution

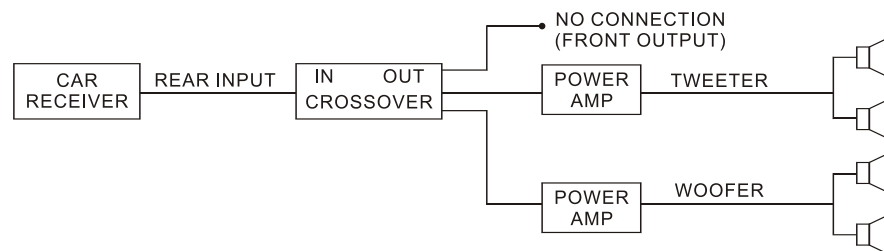
DO NOT ROUTE AUDIO CABLES AND POWER CABLES TOGETHER! THIS CAN CAUSE ENGINE NOISE IN YOUR AUDIO SYSTEM. ALWAYS DISCONNECT THE SYSTEM FROM THE BATTERY BEFORE ATTEMPTING TO MAKE OR ALTER ANY CONNECTIONS. THIS PRODUCT IS DESIRED FOR USE IN ANY 12VOLTS NEGATIVE GROUND ELECTRICAL SYSTEM ONLY. INSTALLING THIS PRODUCT IN ANY POSITIVE GROUND ELECTRICAL SYSTEM COULD SERIOUSLY DAMAGE THE AUDIO SYSTEM.

## FUNCTIONS

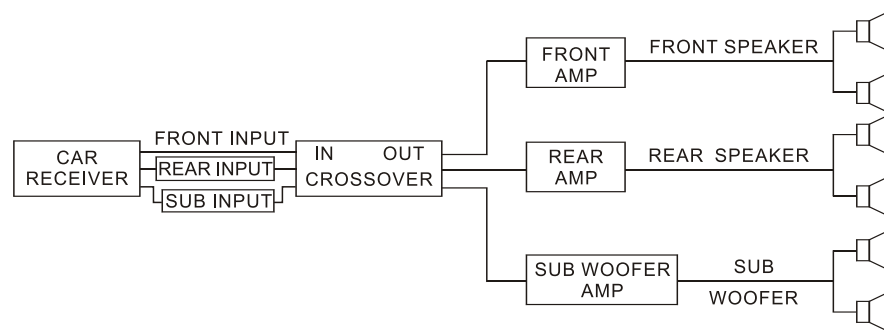
(A) 2-Channel Two-Way System  
(tweeter+ full range)



(B) 2-Channel Two-Way System  
(tweeter+ woofer)

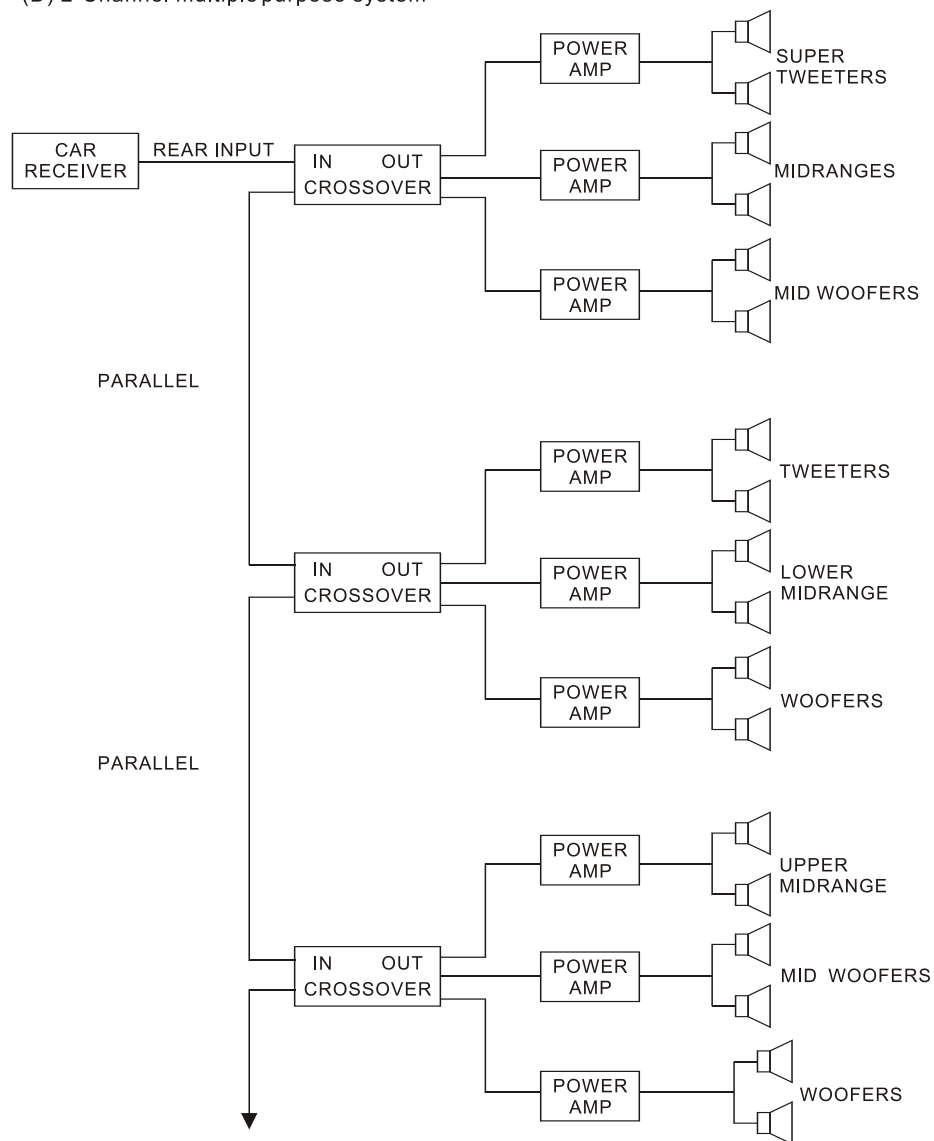


(C) 4-Channel TRI-AMP System



## ELECTRICAL&AUDIO CONNECTIONS

(D) 2-Channel multiple purpose system



## ELECTRICAL&AUDIO CONNECTIONS

### Precautions

- 1.To prevent short circuits, be sure to disconnect the negative battery ground lead before wiring the system up.
- 2.When you finish the installation, be sure to make one more check to be sure everything is done correctly.
- 3.Reinstate all car parts that were removed.
- 4.Reconnect the negative battery ground lead.

### Primary Wiring Descriptions

ELECTRICAL	PRIME CONNECTION	DESCRIPTION
12V	BATTERY+	Connect to the positive battery terminal (constant+12V source)
GROUND	GROUND-	Connect to the vehicle's chassis ground (check for good ground)
REMOTE	REMOTE B+	Connect to the remote control wire (or the electrical antenna )of the car radio/cassette deck
CROSSOVER INPUT/OUTPUT	PRIME CONNECTION	DESCRIPTION
FRONT INPUT	RADIO/TAPE PLAYER TO CROSSOVER MODULE	Connect from pre-amp output of radio/tape player (or CD) into
REAR INPUT	RADIO/TAPE PLAYER TO CROSSOVER MODULE	Connect from pre-amp output of radio/tape player (or CD) into
SUB INPUT	RADIO/TAPE PLAYER TO CROSSOVER MODULE	Connect from pre-amp output of radio/tape player (or CD) into
FRONT OUTPUT	CROSSOVER MODULE TO FRONT AMPLIFIER	Connect from "front output" of CROSSOVER module to front amplifier input
REAR OUTPUT	CROSSOVER MODULE TO REAR AMPLIFIER	Connect from "rear output" of CROSSOVER module to rear amplifier input
SUB-WOOFER OUTPUT	CROSSOVER MODULE TO SUB-WOOFER AMPLIFIER	Connect from sub-woofer output of CROSSOVER to sub-woofer amplifier input.